



India Meteorological Department  
Earth System Science Organisation  
(Ministry of Earth Sciences)

**BULLETIN NO.: 02 (BAY OF BENGAL 01/2020)**

**TIME OF ISSUE: 1140 HOURS IST**

**DATED: 16.05.2020**

**FROM: INDIA METEOROLOGICAL DEPARTMENT (FAX NO. 24643965/24699216/24623220)**

**TO: CONTROL ROOM, NDM, MINISTRY OF HOME AFFAIRS (FAX.NO. 23093750)**

**CONTROL ROOM NDMA (FAX.NO. 26701729)**

**CABINET SECRETARIAT (FAX.NO.23012284, 23018638)**

**PS TO HON'BLE MINISTER FOR S & T AND EARTH SCIENCES (FAX NO.23316745)**

**SECRETARY, MOES, (FAX NO. 24629777)**

**H.Q. (INTEGRATED DEFENCE STAFF AND CDS) (FAX NO. 23005137/23005147)**

**DIRECTOR GENERAL, DOORDARSHAN (23385843)**

**DIRECTOR GENERAL, AIR (23421105, 23421219)**

**PIB MOES (FAX NO. 23389042)**

**UNI (FAX NO. 23355841)**

**D.G. NATIONAL DISASTER RESPONSE FORCE (NDRF) (FAX NO. 26105912, 2436 3260)**

**DIRECTOR, PUNCTUALITY, INDIAN RAILWAYS (FAX NO. 23388503)**

**CHIEF SECRETARY, ANDAMAN & NICOBAR ISLANDS (FAX NO. 03192- 232656)**

**CHIEF SECRETARY, WEST BENGAL (FAX NO. 033-22144328)**

**CHIEF SECRETARY, GOVT. OF ODISHA (FAX NO. 0674 -2536660)**

**CHIEF SECRETARY, ANDHRA PRADESH (FAX NO. 0863-2441029, 08645-246600)**

**CHIEF SECRETARY, TAMIL NADU (FAX NO. 044-25672304)**

**CHIEF SECRETARY, PUDUCHERRY (FAX NO. 0413-2337575, 2334145)**

**Sub: Depression over southeast Bay of Bengal and its likely intensification into a Cyclonic Storm: Pre-cyclone Watch for West Bengal and North Odisha coasts (Yellow Message).**

The **depression** over Southeast Bay of Bengal and neighbourhood moved northwestwards with a speed of 20 kmph during past 03 hours and lay centred at 0830 hrs IST of today, the 16<sup>th</sup> May, 2020 near latitude 10.7°N and longitude 86.5°E, about 1060 km south of Paradip (Odisha), 1220 km south-southwest of Digha (West Bengal) and 1310 km south-southwest of Khepupara (Bangladesh). It is very likely to intensify rapidly into a Cyclonic Storm during next 12 hours and further into a severe cyclonic storm during subsequent 24 hours. It is very likely to move north-northwestwards initially till 17<sup>th</sup> May and then re-curve north-northeastwards across northwest Bay of Bengal towards West Bengal coast during 18<sup>th</sup> to 20<sup>th</sup> May 2020.

Forecast track and intensity are given in the following table:

Date/Time(IST)	Position (Lat. °N/ long. °E)	Maximum sustained surface wind speed (Kmph)	Category of cyclonic disturbance
16.05.20/0830	10.7/86.5	45-55 gusting to 65	Depression
16.05.20/1130	10.9/86.3	50-60 gusting to 70	Deep Depression
16.05.20/1730	11.2/86.2	60-70 gusting to 80	Cyclonic Storm
16.05.20/2330	11.8/86.1	75-85 gusting to 95	Cyclonic Storm
17.05.20/0530	12.3/86.0	90-100 gusting to 110	Severe Cyclonic Storm
17.05.20/1730	13.4/86.0	100-110 gusting to 120	Severe Cyclonic Storm
18.05.20/0530	14.3/86.1	120-130 gusting to 145	Very Severe Cyclonic Storm
18.05.20/1730	15.4/86.2	135-145 gusting to 160	Very Severe Cyclonic Storm
19.05.20/0530	16.6/86.3	155-165 gusting to 180	Very Severe Cyclonic Storm
19.05.20/1730	18.2/86.7	170-180 gusting to 200	Extremely Severe Cyclonic Storm
20.05.20/0530	19.8/87.3	160-170 gusting to 190	Extremely Severe Cyclonic Storm
20.05.20/1730	21.8/87.9	145-155 gusting to 170	Very Severe Cyclonic Storm
21.05.20/0530	24.0/88.5	110-120 gusting to 135	Severe Cyclonic Storm

**Spatial rainfall distribution: Isolated: <25%, A few: 26-50%, Many: 51-75%, Most: 76-100%**

**Rainfall amount (mm): Heavy rain: 64.5 – 115.5, Very heavy rain: 115.6 – 204.4, Extremely heavy rain: 204.5 or more.**

## Warnings:

### (i) Rainfall (over Andaman & Nicobar Islands):

- Light to moderate rainfall at most places with heavy falls at isolated places is very likely over Andaman & Nicobar Islands on 16<sup>th</sup> May.
- **Rainfall (over Odisha & Gangetic West Bengal)**  
Coastal Odisha is likely to experience light to moderate rainfall at many places with heavy falls at isolated places from 18<sup>th</sup> May evening, heavy to very heavy rainfalls at a few places on 19<sup>th</sup> May and isolated heavy rainfall over northeast Odisha on 20<sup>th</sup> May 2020. Coastal districts of Gangetic West Bengal are likely to experience light to moderate rainfall at many places with heavy falls at a few places on 19<sup>th</sup> May, heavy to very heavy falls at a few places with extremely heavy falls at isolated places over Gangetic West Bengal on 20<sup>th</sup> May.

### (ii) Wind warning

- Squally wind speed reaching 45 to 55 kmph gusting to 65 kmph is likely along and off Odisha coast from 19<sup>th</sup> morning and along and off West Bengal coast from 19<sup>th</sup> afternoon. The wind speed will gradually increase becoming gale wind speed reaching 75 to 85 kmph gusting to 95 kmph from 20<sup>th</sup> morning along and off north Odisha and West Bengal coast. It will gradually increase thereafter.
- Squally wind speed reaching 45 to 55 kmph gusting to 65 kmph is likely over Andaman Sea during next 48 hours.
- Squally wind speed reaching 45 to 55 kmph gusting to 65 kmph is prevailing over southeast and adjoining southwest Bay of Bengal. It is likely to increase becoming 90-100 gusting to 110 kmph over eastcentral and adjoining west central Bay of Bengal by 17<sup>th</sup> morning, 120-130 gusting to 145 kmph over southern parts of central Bay of Bengal by 18<sup>th</sup> morning, 155-165 gusting to 180 kmph over northern parts of central Bay of Bengal and adjoining north Bay of Bengal on 19<sup>th</sup>, and 160-170 gusting to 190 kmph over north Bay of Bengal by 20<sup>th</sup> morning.

### (iii) Sea condition

Sea condition will be rough to very rough over south & adjoining central Bay of Bengal and Andaman Sea till 16<sup>th</sup> May afternoon. It will be High over southwest and adjoining central Bay of Bengal from the 16<sup>th</sup> May evening, very high over the same region from 17<sup>th</sup> morning. It will become phenomenal over southern parts of central Bay of Bengal on 18<sup>th</sup>, over northern parts of central Bay of Bengal and adjoining north Bay of Bengal on 19<sup>th</sup> May and over north Bay of Bengal on 20<sup>th</sup> May 2020.

### (iv) Fishermen Warning

- The fishermen are advised not to venture into south Bay of Bengal from 16<sup>th</sup> to 17<sup>th</sup> May, to central Bay of Bengal 17<sup>th</sup> to 18<sup>th</sup> May and north Bay of Bengal during 19 to 20<sup>th</sup> May 2020.
- Also, fishermen are advised not to venture into north Bay of Bengal along and off North Odisha, West Bengal and adjoining Bangladesh coast during 18<sup>th</sup> to 20<sup>th</sup> May 2020.

Kindly visit [www.rsmcnewdelhi.imd.gov.in](http://www.rsmcnewdelhi.imd.gov.in) and [www.mausam.imd.gov.in](http://www.mausam.imd.gov.in) for updates on the system.

**Next Bulletin will be issued at 1430 hours IST of 16<sup>th</sup> May, 2020.**

**(Sunitha Devi)**  
**Scientist-E, RSMC, New Delhi**

**Copy to: CRS, Pune/ ACWC Chennai/ ACWC Kolkata/CWC Bhubaneswar/ /CWC Visakhapatnam**

**Spatial rainfall distribution: Isolated: <25%, A few: 26-50%, Many: 51-75%, Most: 76-100%**  
**Rainfall amount (mm): Heavy rain: 64.5 – 115.5, Very heavy rain: 115.6 – 204.4, Extremely heavy rain: 204.5 or more.**

SAT : INSAT-3D IMG

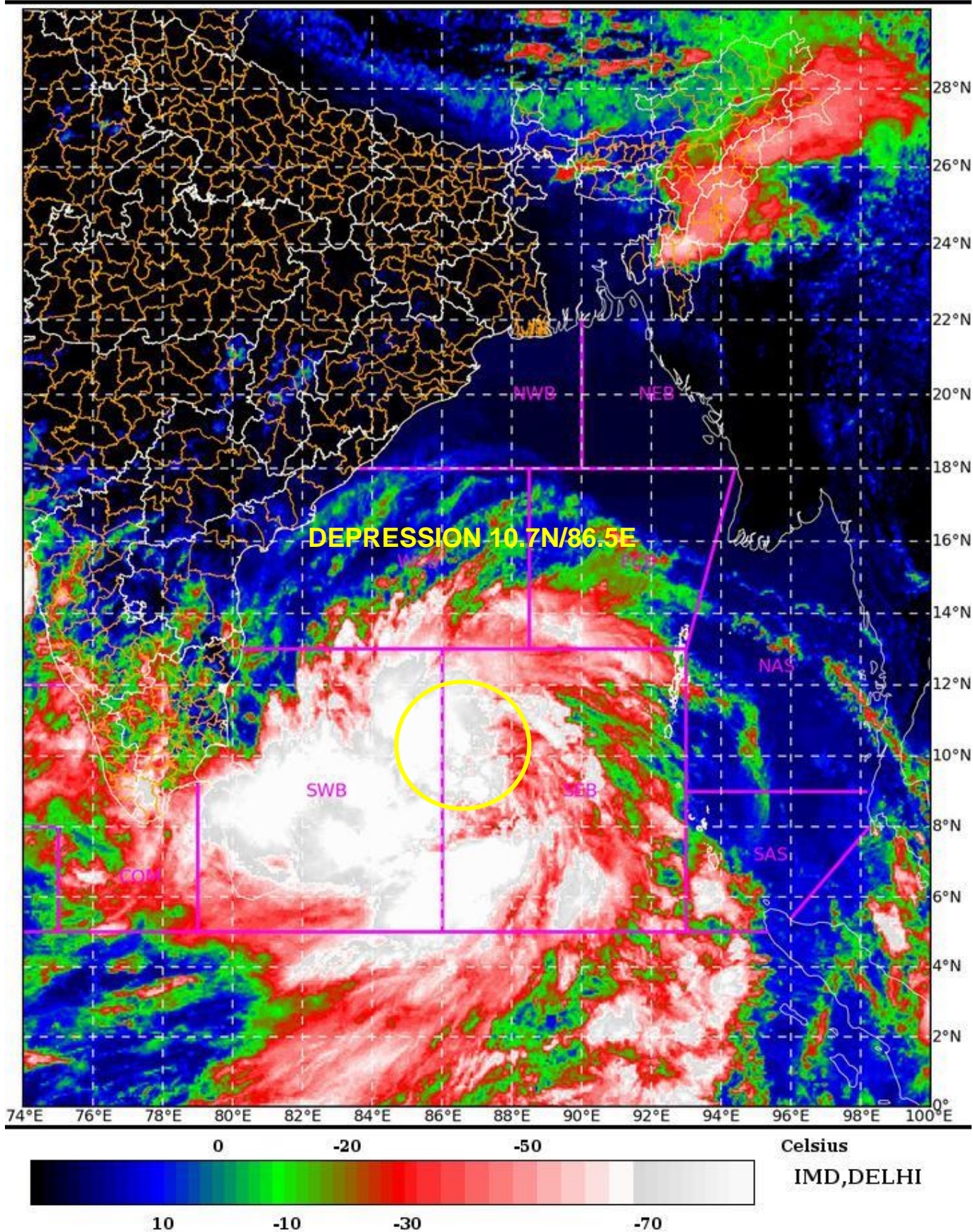
16-05-2020/(0500 to 0527) GMT

IMG\_TIR1\_TEMP 10.8 um

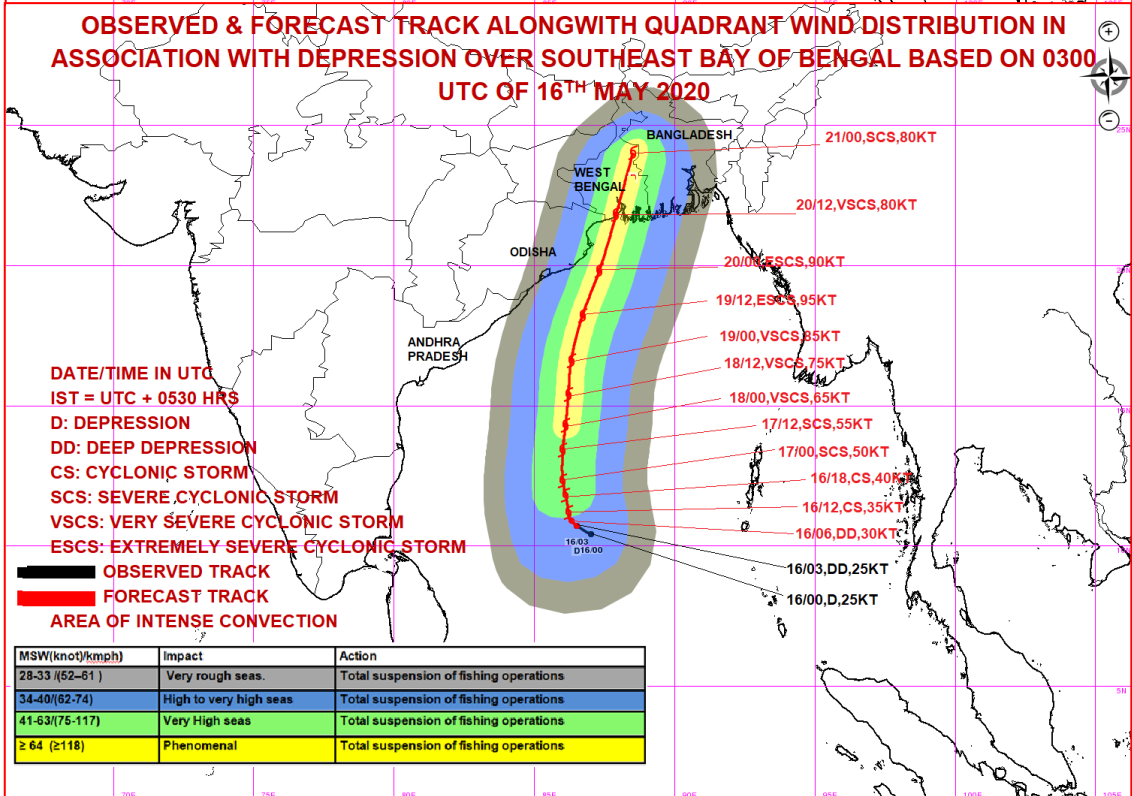
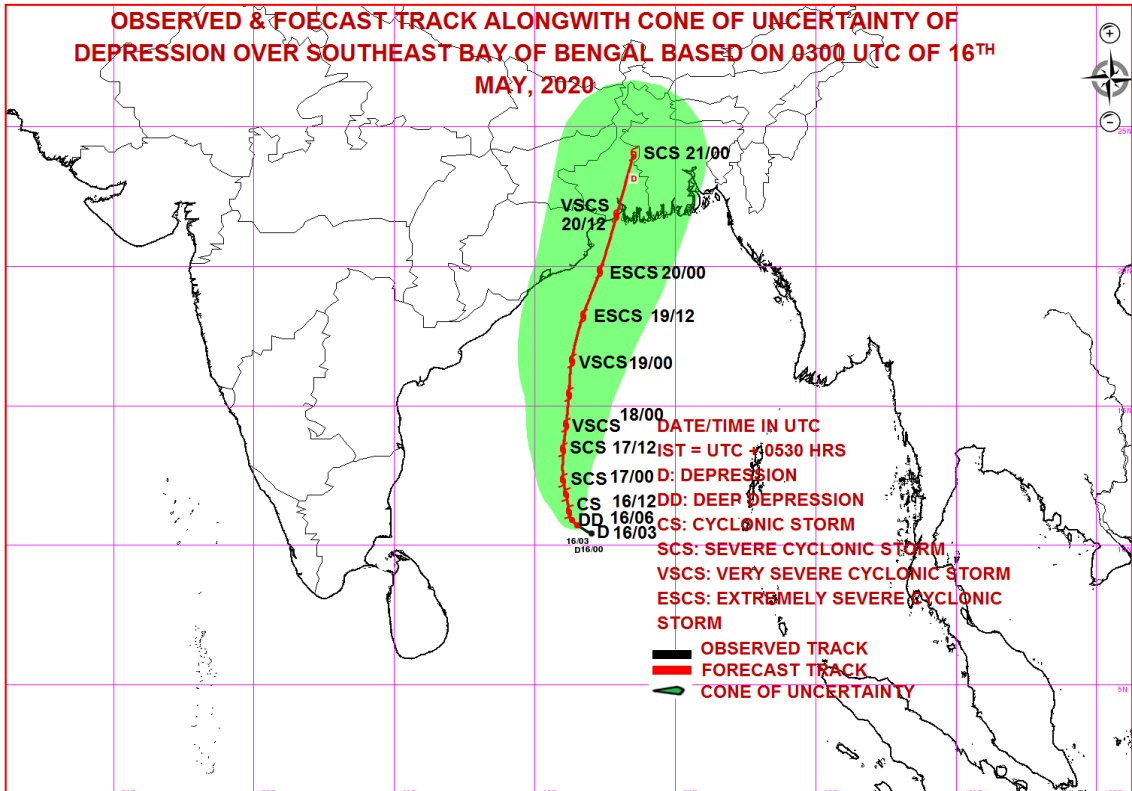
16-05-2020/(1030 to 1057) IST



L1C Mercator



Spatial rainfall distribution: Isolated: <25%, A few: 26-50%, Many: 51-75%, Most: 76-100%  
Rainfall amount (mm): Heavy rain: 64.5 – 115.5, Very heavy rain: 115.6 – 204.4, Extremely heavy rain: 204.5 or more.



Spatial rainfall distribution: Isolated: <25%, A few: 26-50%, Many: 51-75%, Most: 76-100%  
 Rainfall amount (mm): Heavy rain: 64.5 – 115.5, Very heavy rain: 115.6 – 204.4, Extremely heavy rain: 204.5 or more.